

S M P - 32

SITE PREPARATION PHASING PLANS (CA No.59)

MISSION VALLEY ROCK COMPANY

SHEET INDEX

1. PHASING PLAN COVER SHEET

2. PHASE 1 - CONDITION APPROVALS (BEFORE SITE PREP) - (YEAR 0-1) (CA 20)

1. Payment to County for Sunol Downtown Community Improvement Fund \$40,000 - Done (CA No.14) Jan. 2001
2. Payment to County for Agricultural Study \$50,000 - Done (CA No.13) Jan. 2001
3. Payment to Sunol School District. Donation to general fund \$40,000 - Done (CA No.15) Jan. 2001
4. LSA begins Biological Studies in conveyor easement - 12/11/00 - Done (CA No.50)
5. Sunol Meeting re-comments on Landscape Plans - 1/17/01 - Done (CA No.68)
6. Landscape Plan comment period closes 1/31/01 - Done (CA No.68)
7. Revise Phasing Plan
8. Prepare Landscape Manual
9. Alameda County approve Landscape Plans (CA No.68)
10. SFWD review/approval of Landscape and Grading Plan (CA No.68)

3. PHASE 2 - SITE PREPARATION - (YEAR 0-3) (CA 20)

1. Conduct Biological Field Studies (CA No.50)
2. Construct conveyor support pad thru access easement
3. Install Air Monitoring Station
4. Install Stage 1 Landscaping (perimeter landscaping) (CA No.23, 49 & 71)
5. Install Perimeter Fence (CA No.82)
6. Install Electrical Service
7. Relocate Waterlines
8. Install Slurry Wall (CA No.29)
9. Soil Sampling - Modules 1 and 2 (CA No.36)
10. Stake quarry limits for inspection. (CA No.71)
11. Establish program for interim inspections. (CA No.71)

4. PHASE 3 - STRIPPING - (YEAR 3-5) (CA 20)

1. Strip Overburden Module 1 and Module 2
2. Use strippings to construct perimeter grading features - raised plains, tree alee, berms and hillocks, except for existing vineyard. Hydroseed completed berms and hillocks. (CA No.27)
3. Stage 2 - Landscape planting of completed berms and hillocks.

5. PHASE 4 - BEGIN MINING - (YEAR 5-11) (CA 20)

1. Start mining Module 1
2. Continue Landscaping raised plains, berms, hillocks (Stage 2 Landscaping) (CA No.20, 23, 49 & 71)

6. PHASE 5 - MINING - (YEAR 11-15)

1. Soils Sample Module 3
2. Strip Overburden Module 3
3. Mine Module 2
4. Complete Mining Module 1
5. Backfill portions of Module 1

7. PHASE 6 - MINING - (YEAR 15-17)

1. Soils Sample Module 4
2. Strip Overburden Module 4
3. Mine Module 3
4. Complete Mining Module 2
5. Backfill portions of Module 1
6. Stage 4 - Hydroseed Slopes Module 1 and 2

8. PHASE 7 - MINING - (YEAR 17-21)

1. Soils Sample Module 5 and 6
2. Strip Overburden Module 5 and 6
3. Mine Module 4
4. Complete Mining Module 3
5. Backfill portions of Module 1
6. Hydroseed Slopes Module 3
7. Construct 15 AC. Vineyard (CA No.23 & 24)

9. PHASE 8 - MINING - (YEAR 21-25)

1. Soils Sample Module 7
2. Strip Overburden Module 7
3. Mine Module 5 and 6
4. Complete Mining Module 4
5. Backfill portions of Module 1
6. Hydroseed Module 4

10. PHASE 9 - MINING - (YEAR 25-28)

1. Complete Mining Module 7
2. Complete backfilling portions of Module 1 and Landscape
3. Hydroseed Slopes Modules 5, 6 and 7

11. PHASE 10 - RECLAMATION - (YEAR 29)

1. Water Storage

NOTES:

1. Mission Valley Rock Co. as permittee and lessee of the 242 acre SMP-32 site is responsible for the implementation of the actions and programs specified in the SMP-32 Conditions of Approval, the Terms and Conditions in the Quarry Lease between the City and County of San Francisco and Mission Valley Rock Co. dated September 26, 2000, and such other regulations as may specifically apply to this grading, landscaping, mining and water storage project. MVR is responsible for the maintenance of improvements constructed or installed under this project for the term of the lease (November 1, 2000 through October 31, 2040) except for those improvements, which upon completion, are returned to the control and operation of a public agency.

2. Duration of years were based on an average annual rate of production. Future Market demands fluctuate and will effect rate of production and schedule.

**APPROVED BY THE
PLANNING DIRECTOR**

ON 10/11/01
(DATE)

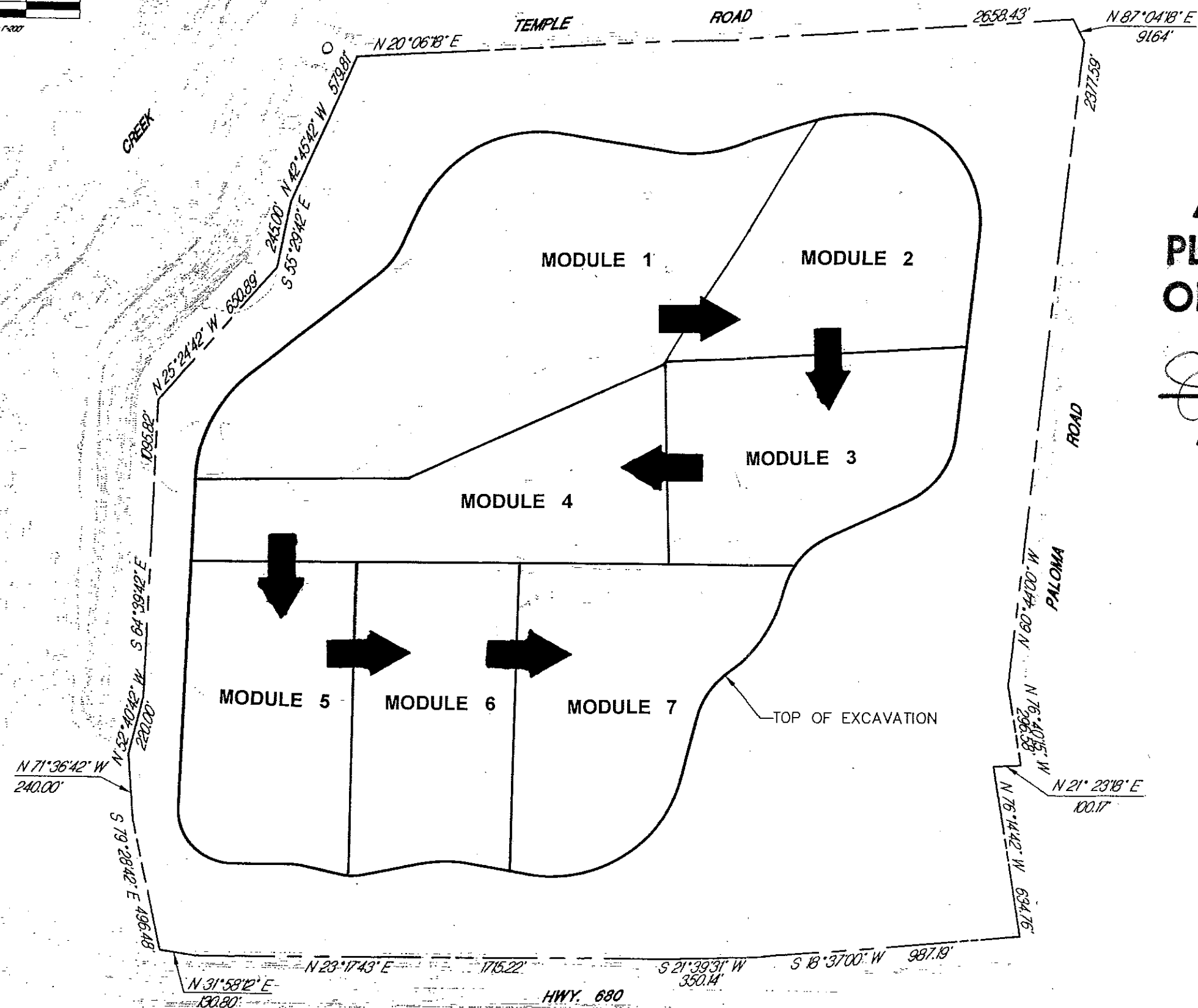
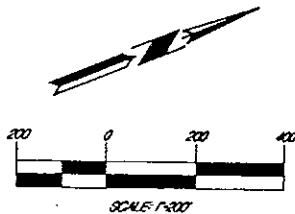
James E. Sorensen

JAMES E. SORENSEN
Alameda County Planning Director

APPROVED
10/11/01

Spinardi Associates
 Civil and Environmental
 Engineering
 265 Sea View Ave., Piedmont, CA 94610
 S M P - 32
 COVER SHEET
 SITE PREPARATION PHASING PLAN
 MISSION VALLEY ROCK COMPANY

DATE	BY	CHECKED BY	DATE	BY	CHECKED BY	DATE	BY	CHECKED BY	DATE
SHEET NUMBER									
1									
OF 11 SHTS.									
JOB NUMBER									
0020									



**APPROVED BY THE
PLANNING DIRECTOR**

ON 10/11/08
(DATE)

James E. Sorensen
JAMES E. SORENSEN
Alameda County Planning Director

J. Sorensen
10/21/08

NO.	DATE	BY	DESCRIPTION
1	JAN 2001	JDS	
2	JAN 2001	JDS	
3	JAN 2001	JDS	
4	JAN 2001	JDS	
5	JAN 2001	JDS	
6	JAN 2001	JDS	
7	JAN 2001	JDS	
8	JAN 2001	JDS	
9	JAN 2001	JDS	
10	JAN 2001	JDS	
11	JAN 2001	JDS	
12	JAN 2001	JDS	
13	JAN 2001	JDS	
14	JAN 2001	JDS	
15	JAN 2001	JDS	
16	JAN 2001	JDS	
17	JAN 2001	JDS	
18	JAN 2001	JDS	
19	JAN 2001	JDS	
20	JAN 2001	JDS	
21	JAN 2001	JDS	
22	JAN 2001	JDS	
23	JAN 2001	JDS	
24	JAN 2001	JDS	
25	JAN 2001	JDS	
26	JAN 2001	JDS	
27	JAN 2001	JDS	
28	JAN 2001	JDS	
29	JAN 2001	JDS	
30	JAN 2001	JDS	
31	JAN 2001	JDS	
32	JAN 2001	JDS	
33	JAN 2001	JDS	
34	JAN 2001	JDS	
35	JAN 2001	JDS	
36	JAN 2001	JDS	
37	JAN 2001	JDS	
38	JAN 2001	JDS	
39	JAN 2001	JDS	
40	JAN 2001	JDS	
41	JAN 2001	JDS	
42	JAN 2001	JDS	
43	JAN 2001	JDS	
44	JAN 2001	JDS	
45	JAN 2001	JDS	
46	JAN 2001	JDS	
47	JAN 2001	JDS	
48	JAN 2001	JDS	
49	JAN 2001	JDS	
50	JAN 2001	JDS	
51	JAN 2001	JDS	
52	JAN 2001	JDS	
53	JAN 2001	JDS	
54	JAN 2001	JDS	
55	JAN 2001	JDS	
56	JAN 2001	JDS	
57	JAN 2001	JDS	
58	JAN 2001	JDS	
59	JAN 2001	JDS	
60	JAN 2001	JDS	
61	JAN 2001	JDS	
62	JAN 2001	JDS	
63	JAN 2001	JDS	
64	JAN 2001	JDS	
65	JAN 2001	JDS	
66	JAN 2001	JDS	
67	JAN 2001	JDS	
68	JAN 2001	JDS	
69	JAN 2001	JDS	
70	JAN 2001	JDS	
71	JAN 2001	JDS	
72	JAN 2001	JDS	
73	JAN 2001	JDS	
74	JAN 2001	JDS	
75	JAN 2001	JDS	
76	JAN 2001	JDS	
77	JAN 2001	JDS	
78	JAN 2001	JDS	
79	JAN 2001	JDS	
80	JAN 2001	JDS	
81	JAN 2001	JDS	
82	JAN 2001	JDS	
83	JAN 2001	JDS	
84	JAN 2001	JDS	
85	JAN 2001	JDS	
86	JAN 2001	JDS	
87	JAN 2001	JDS	
88	JAN 2001	JDS	
89	JAN 2001	JDS	
90	JAN 2001	JDS	
91	JAN 2001	JDS	
92	JAN 2001	JDS	
93	JAN 2001	JDS	
94	JAN 2001	JDS	
95	JAN 2001	JDS	
96	JAN 2001	JDS	
97	JAN 2001	JDS	
98	JAN 2001	JDS	
99	JAN 2001	JDS	
100	JAN 2001	JDS	

MVR 00789