



**HANSON AGGREGATES
PERIODIC REVIEW 2009
SMP-24, 32, 33**

SCALE	1"=500'
DATE	JANUARY 2009
DESIGNER	JOSE R. GOS
DRAWN BY	ALWH
CHECKED BY	
DATE	
BY	
REVISION	
SHEET NUMBER	1
OF	5 SHTS.
JOB NUMBER	001.00

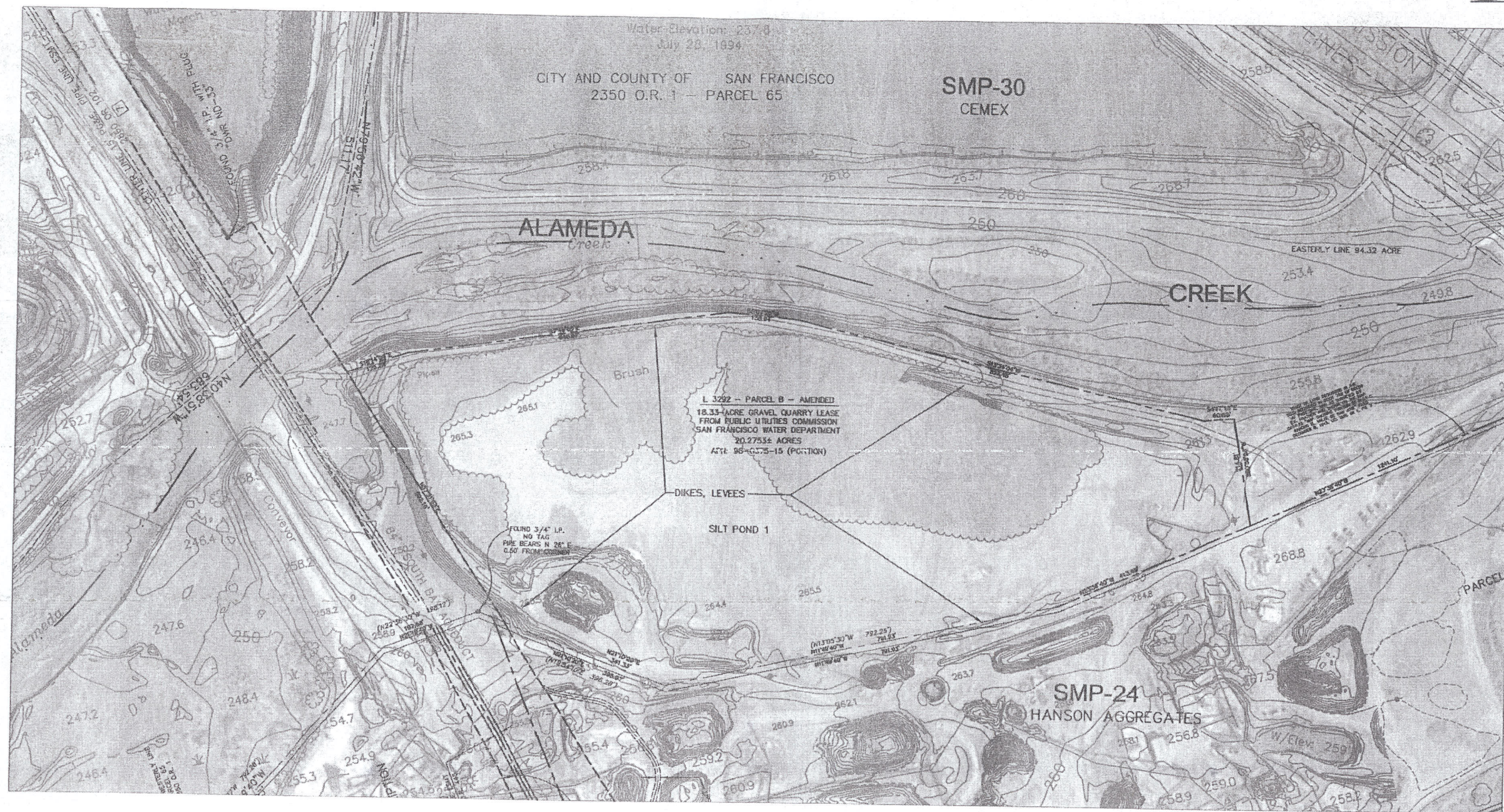
TUWILL INC.

NOTE: THIS MAP WAS PREPARED USING PHOTOGRAMMETRIC COMPUTER AIDED DRAFTING TECHNIQUES. IN OPEN UNDEVELOPED AREAS THIS MAP COMPLES WITH NATIONAL STANDARDS FOR MAP ACCURACY. IN AREAS OF DENSE VEGETATION WHERE THE GROUND IS OCCULTED FROM VIEW, CONTOURS MAY DEVIATE FROM CORRECT ELEVATION. GRID IS BASED ON CALIFORNIA COORDINATE SYSTEM, ZONE 18, NAD83, EPC 1988. ELEVATIONS ARE BASED ON NAVD83. FIELD SURVEY CONTROL BY TUWILL INC. DATE OF PHOTOGRAPHY: JULY 18, 2008.

*SMP-24
Rb with by Hansen*

- LEGEND**
- PROPERTY LINE
 - QUARRY PERMIT BOUNDARY
 - MINING ACTIVITY





Towill, Inc

NOTE:
THIS MAP WAS PREPARED USING PHOTOGRAMMETRIC COMPUTED
AIDED DRAFTING TECHNIQUES.
IN OPEN, UNRESTRICTED AREAS THIS MAP COMPLES WITH
NATIONAL STANDARDS FOR MAP ACCURACY. IN AREAS OF
DENSE VEGETATION WHERE THE GROUND IS OCCULDED FROM VIEW,
CONTOURS MAY DEVIATE FROM CORRECT ELEVATION.
GRID IS BASED ON CALIFORNIA COORDINATE SYSTEM, ZONE III, NAD83, EPC 1986.
ELEVATIONS ARE BASED ON NAVD83.
FIELD SURVEY CONTROL BY TOWILL, INC.
DATE OF PHOTOGRAPHY JULY 19, 2006

GRAPHIC SCALE
0' 100' 200'

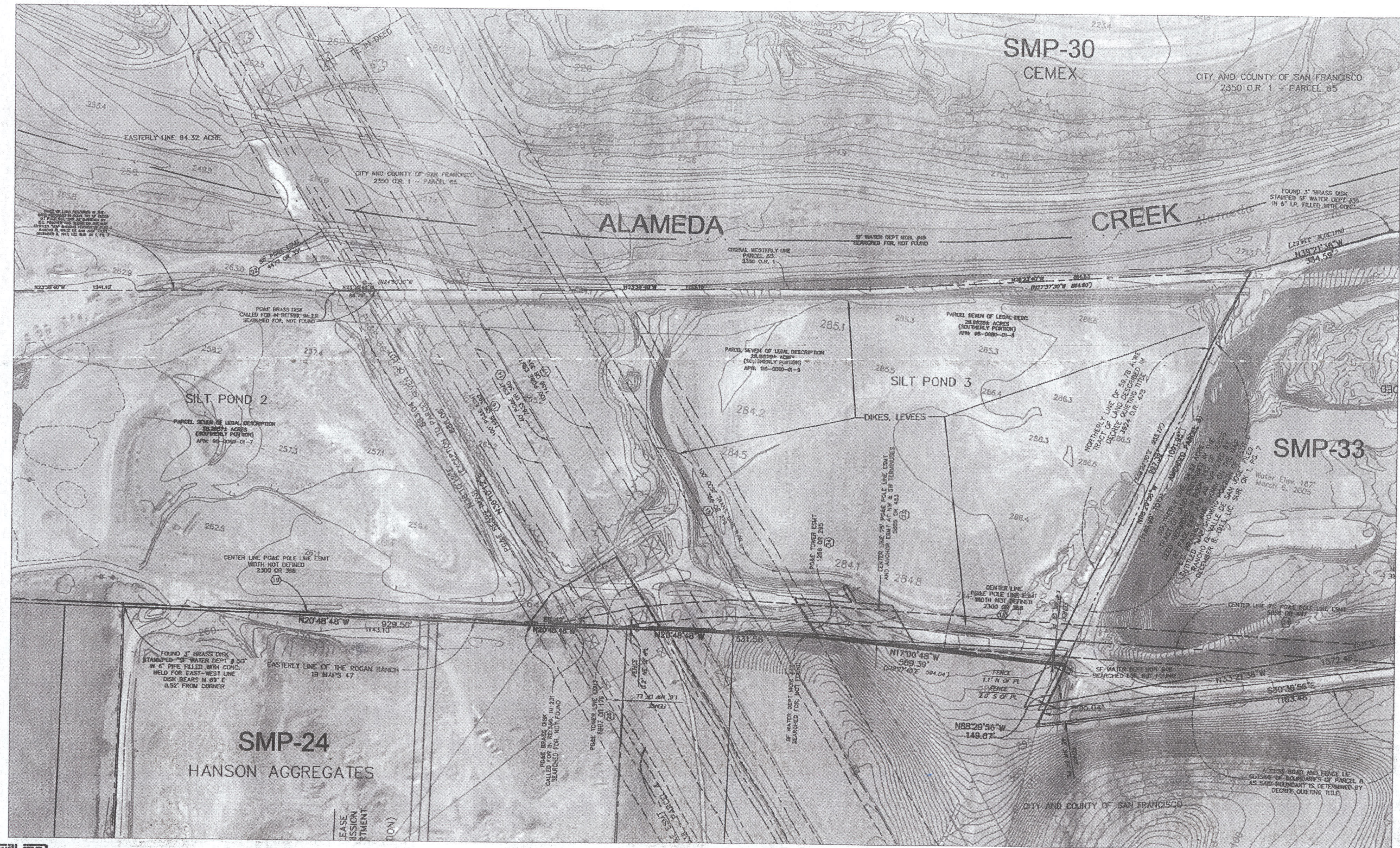
Civil and Environmental
Engineering

Spinardi Associates
265 Sea View Avenue, Piedmont, Ca 94610

HANSON AGGREGATES
SILT POND 1
PERIODIC REVIEW 2009
SMP-24, 32, 33

DATE	SCALE	BY	DATE
JANUARY 2008	1" = 100'	KCS	
JAN 08			
SHEET NUMBER			
2			
OF	5	SHTS.	
JOB NUMBER			
001.00			


Scale	1"=100'
Date	JANUARY 2009
Drawn By	AKS
Checked By	MLB
Project No.	
Sheet No.	3
Total Sheets	5
Job Number	001.00



to will, inc.
 NOTE:
 THIS MAP WAS PREPARED USING PHOTODIAGRAMMATIC COMPUTER
 AIDED DRAFTING TECHNIQUES.
 IN OPEN, UNOCCUPIED AREAS THIS MAP COMPLES WITH
 NATIONAL STANDARDS FOR MAP ACCURACY. IN AREAS OF
 DENSE VEGETATION WHERE THE GROUND IS OCCUPIED FROM VIEW,
 CONTOURS MAY DEVIATE FROM CORRECT ELEVATION.
 GRID IS BASED ON CALIFORNIA COORDINATE SYSTEM, ZONE II, NAD83, EPIC 1985.
 ELEVATIONS ARE BASED ON HANSON
 FIELD SURVEY CONTROL BY TOWILL INC.
 DATE OF PHOTOGRAPHY JULY 18, 2008.






Spinardi Associates
 Civil and Environmental
 Engineering
 285 Sea View Avenue, Piedmont, Ca 94610

**HANSON AGGREGATES
 PLANT SITE AREA
 PERIODIC REVIEW 2009
 SMP-24, 32, 33**

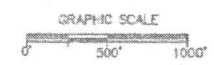
SCALE	1"=300'
DATE	JANUARY 2009
DRAWN BY	KDS
CHECKED BY	HLH
PROJECT NO.	001.00
SHEET NUMBER	4
OF	5 SHTS.
JOB NUMBER	001.00



twill inc
an aeca, inc. co. inc. member of the

NOTE: THIS MAP WAS PREPARED USING PHOTODIAGRAMMETRIC COMPUTER AIDED DRAFTING TECHNIQUES. IN OPEN, UNOBSTRUCTED AREAS THIS MAP COMPLIES WITH NATIONAL STANDARDS FOR MAP ACCURACY IN AREAS OF DENSE VEGETATION WHERE THE GROUND IS OBSCURED FROM VIEW, CONTOURS MAY DEVIATE FROM CORRECT ELEVATION. GRID IS BASED ON CALIFORNIA COORDINATE SYSTEM, ZONE II, NAD83, GPC 1988. ELEVATIONS ARE BASED ON NAVD83. FIELD SURVEY CONTROL BY TWILL, INC. DATE OF PHOTOGRAPHY JULY 16, 2006.

- LEGEND**
- PROPERTY LINE
 - QUARRY PERMIT BOUNDARY
 - MAINTENANCE ROADS
 - AGRICULTURE (GRAZING)
 - WATER STORAGE



**HANSON AGGREGATES
 PERIODIC REVIEW 2009
 SMP-24, 32, 33
 RECLAMATION PLAN OVERVIEW**

SCALE	1"=500'	DATE	JANUARY 2009
DESIGNED BY	KOS	CHECKED BY	ALWA
DRAWN BY	ALWA	DATE	01/09
PROJECT NO.			
SHEET NO.	5	OF	5 SHTS.
JOB NUMBER	001.00		