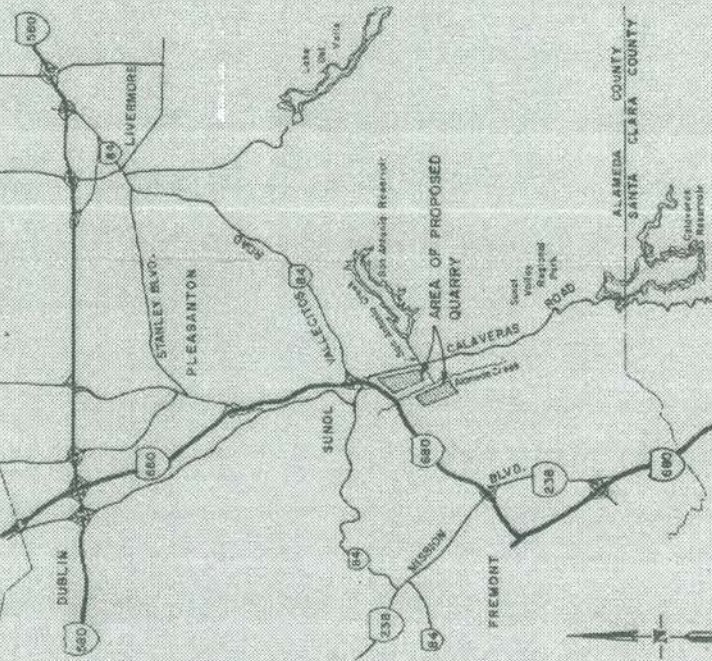


MISSION VALLEY ROCK QUARRY

SUNOL, CALIFORNIA



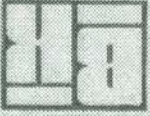
INDEX

SHEET NO.	DISCRIPTION
1	TITLE SHEET
2	EXISTING CONDITIONS
3	STAGING PLAN NO. 1
4	STAGING PLAN NO. 2
5	STAGING PLAN NO. 3
6	STAGING PLAN NO. 4
7	STAGING PLAN NO. 5
8	FINAL RECLAMATION PLAN
9	PLOT PLAN & CROSS SECTIONS - OLD LEASE AREA
10	PLOT PLAN & CROSS SECTIONS - NEW LEASE AREA

EXHIBIT B
GMP-24
 Approved by the Board of Supervisors
 Resolution 85531
 Adopted by the Board of Supervisors
 on 11/16/85
 11/16/85

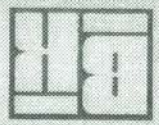
By *W.M. Calvert* DATE 9/16/85
 W.M. CALVERT
 REGISTERED CIVIL ENGINEER NO. 13748

BISSELL & KARN, INC.
 CIVIL ENGINEERS
 2851 MERCED ST., SAN LEANDRO, CALIF. 94577
 (415) 483-2170



TITLE SHEET
 MISSION VALLEY ROCK QUARRY
 SUNOL, CA

SCALE	AS SHOWN
DATE	9/16/85
SHEET NO.	1
OF 10 SHEETS	
JOB NO. 85708	
FILE NO.	



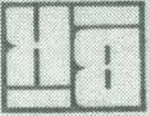
MISSION VALLEY ROCK QUARRY
 STAGING PLAN NO. 1 (5 YEARS)
 SUNOL, CA.

DATE	BY	CR.
SCALE		
1" = 100'		
SHEET NUMBER	3	
DATE OF PREPARATION	11-1-68	
JOB NO.	MS-7076	

LEGEND

- QUARRY BOUNDARY
- CURRENT MINING
- ACTIVE SILT POND
- CAPPED SILT POND
- WASH WATER POND
- INACTIVE MINING





MISSION VALLEY ROCK QUARRY
STAGING PLAN NO. 2 (30 YEARS)
 SUNOL, CA

DATE	BY	REVISIONS

LEGEND

- QUARRY BOUNDARY
- CURRENT MINING
- ACTIVE SILT POND
- QUARRY WASTES
- CAPPED SILT POND
- WASH WATER POND
- INACTIVE MINING

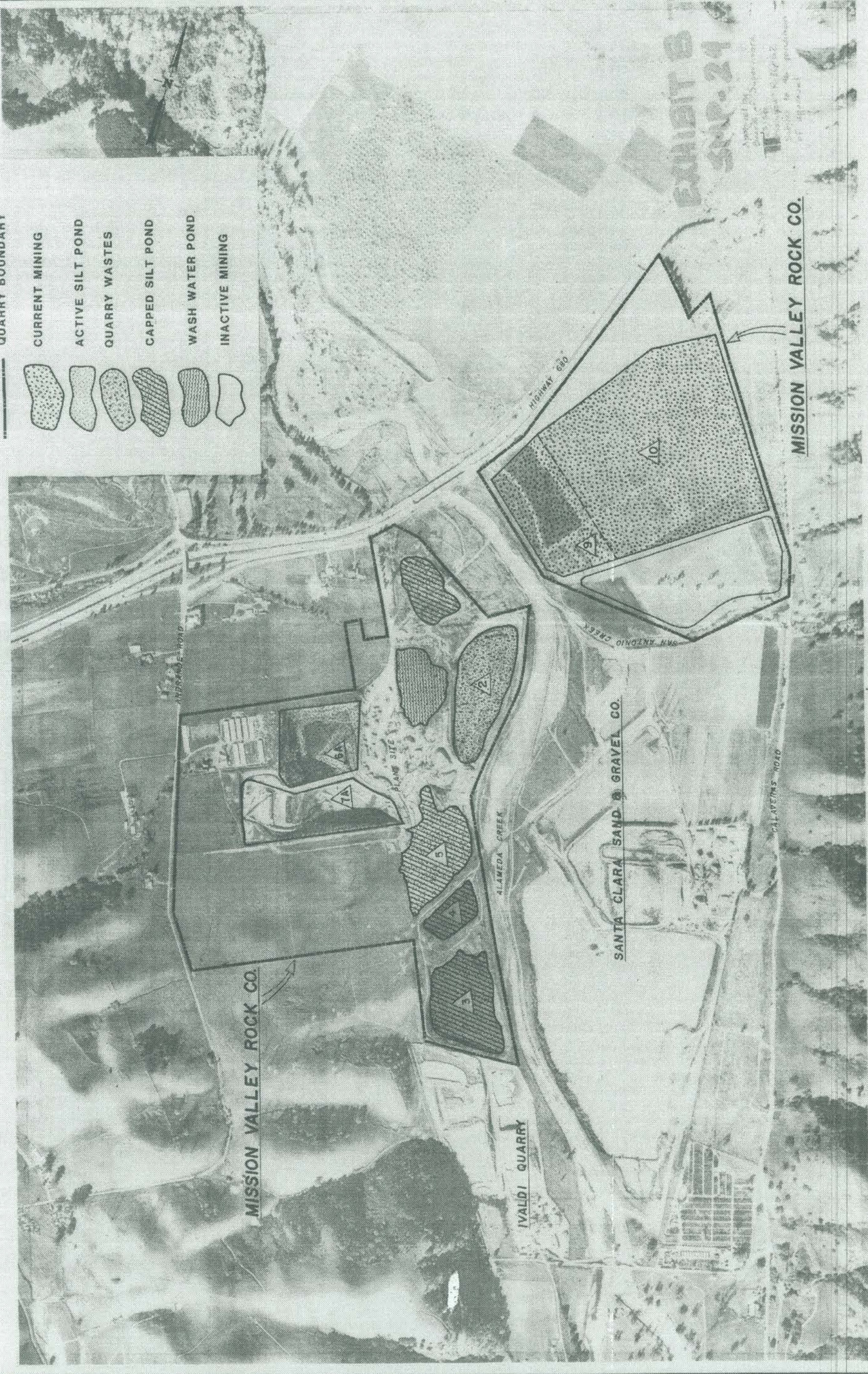


EXHIBIT B
APP-24

BISSSELL & KARN, INC.
 CIVIL ENGINEERS
 3551 MERCED ST., SAN LEANDRO, CALIF. 94577
 (415) 483-2170



STAGING PLAN NO. 3 (10 YEARS)
 MISSION VALLEY ROCK QUARRY

SUNOL, CA

DATE	BY	REVISIONS

SCALE: 1" = 100'
 DRAWN: [unclear]
 CHECKED: [unclear]
 DATE: [unclear]
 SHEET NO. 5
 OF 10 SHEETS
 JOB NO. BKT/100
 FILE NO.

- LEGEND**
- QUARRY BOUNDARY
 - CURRENT MINING
 - ACTIVE SILT POND
 - QUARRY WASTES
 - CAPPED SILT POND
 - WASH WATER POND
 - INACTIVE MINING



EXHIBIT B
 SMP-24

AERO-GEODETIC CORP
 1845 W. MARKET ST.
 SAN FRANCISCO, CALIF. 94116

BISSSELL & KARN, INC.
 CIVIL ENGINEERS
 2551 MERCED ST. SAN LEANDRO, CALIF. 94577
 (415) 483-2170



MISSION VALLEY ROCK QUARRY
 STAGING PLAN NO. 4 (5 YEARS)
 SUNOL, CA.

DATE	BY	CHK	REVISIONS

SHEET NO. 6
 OF 10 SHEETS
 JOB NO. BS-11009

AERO-SCOUTIC CORP.
 1055 10th STREET
 DATE OF PHOTOGRAPH 12-14-67
 SCALE 1" = 100' ±

LEGEND

- QUARRY BOUNDARY
- CURRENT MINING
- ACTIVE SILT POND
- QUARRY WASTES
- CAPPED SILT POND
- WASH WATER POND
- INACTIVE MINING



DATE	BY	REVISIONS

DATE: 11/11/11
 DRAWN: [Name]
 CHECKED: [Name]
 PROJECT: SUNOL, CA.
 SHEET NO. 7 OF 10 SHEETS
 JOB NO. B5771/05

LEGEND

	QUARRY BOUNDARY
	CURRENT MINING
	ACTIVE SILT POND
	QUARRY WASTES
	CAPPED SILT POND
	WASH WATER POND
	INACTIVE MINING





FINAL RECLAMATION
 MISSION VALLEY ROCK QUARRY

SUNOL, CA

DATE	BY	DESCRIPTION

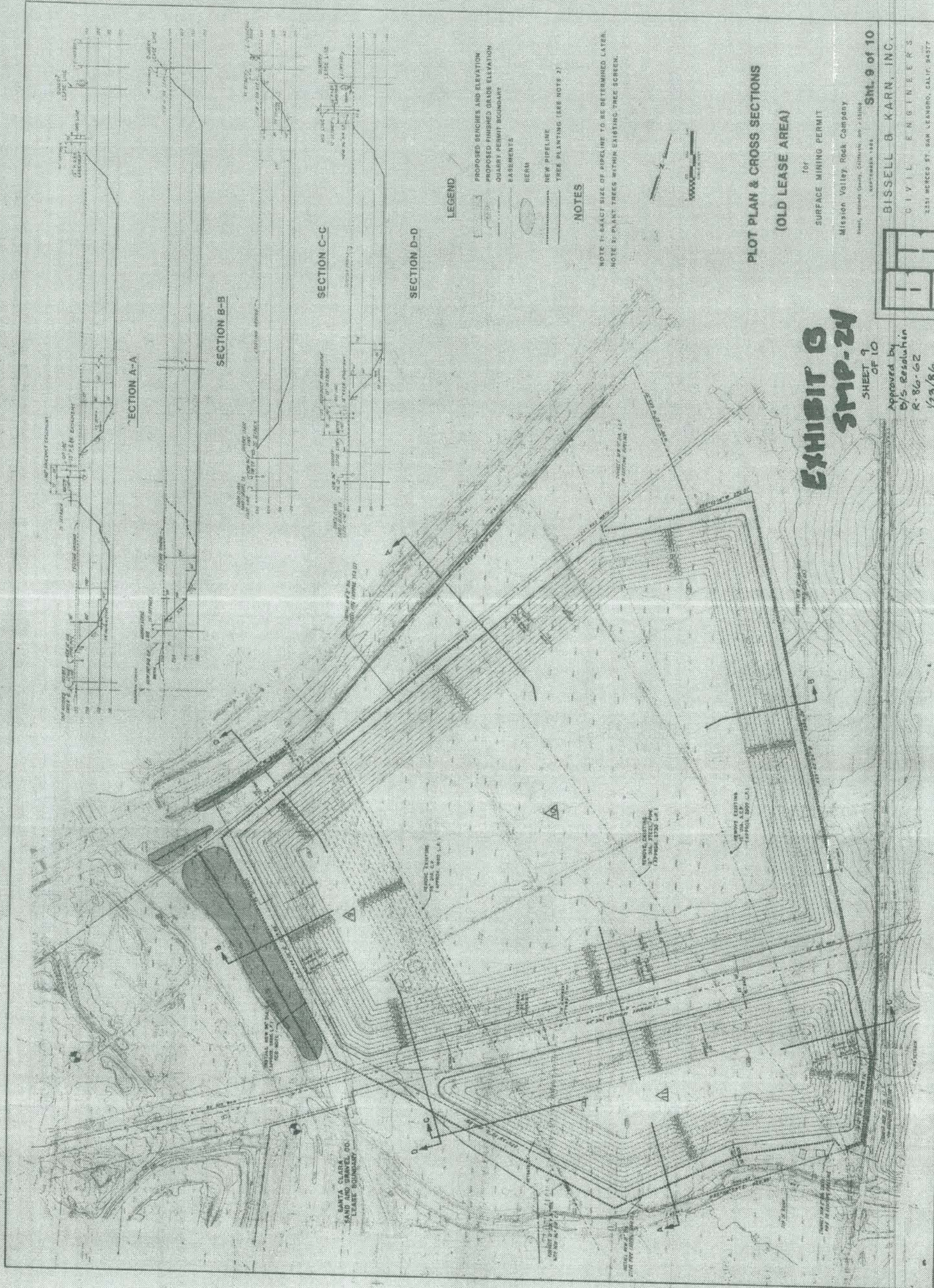
SHEET NO. 8
 OF 10 SHEETS
 FOR REF. SECTION
 FILE NO.

LEGEND

- QUARRY BOUNDARY
- WATER STORAGE
- AGRICULTURAL LAND
 (REVEGETATE AS PER AGRONOMIST RECOMMENDATIONS)



AERO - GEODETIC CORP.
 DATE OF PHOTOGRAPH: 3-14-66
 SCALE: 1" = 100'



SECTION A-A

SECTION B-B

SECTION C-C

SECTION D-D

LEGEND

- PROPOSED BENCHES AND ELEVATION
- PROPOSED FINISHED BRIDGE ELEVATION
- QUARRY PERMIT BOUNDARY
- BASEMENTS
- BURN
- NEW PIPELINE
- TREE PLANTING (SEE NOTE 2)

NOTES

NOTE 1: EXACT SIZE OF PIPELINE TO BE DETERMINED LATER.
 NOTE 2: PLANT TREES WITHIN EXISTING TREE SCREEN.



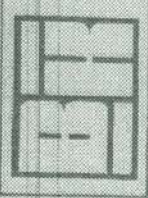
PLOT PLAN & CROSS SECTIONS
 (OLD LEASE AREA)

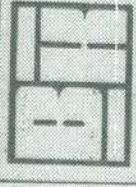
FOR
 SURFACE MINING PERMIT
 Mission Valley Rock Company
 1000, 1000th Street, Colton, CA 95310
 SEPTEMBER 1988
SML 9 of 10
BISSELL & KARN, INC.
 CIVIL ENGINEERS
 2251 MERCED ST. SAN LEANDRO, CALIF. 94577
 (415) 483-2170

EXHIBIT B
SMP-24

SHEET 9
 OF 10

Approved by
 D/S Resolution
 R 86-62
 1/23/86





BISSELL & KARN, INC.
 CIVIL ENGINEERS
 2335 MERCED ST. SAN LEANDRO, CALIF. 94377
 (415) 483-2170

Sht. 10 of 10

**PLOT PLAN & CROSS SECTIONS
 (NEW LEASE AREA)**

for
SURFACE MINING PERMIT
 Mission Valley Rock Company
 State, Alameda County, California, 36

LEGEND
 PROPOSED BENCHES & ELEVATION
 PROPOSED FINISHED GRASS ELEVATIONS
 QUARRY PERMIT BOUNDARY
 EASEMENT



Section D-D

Section C-C

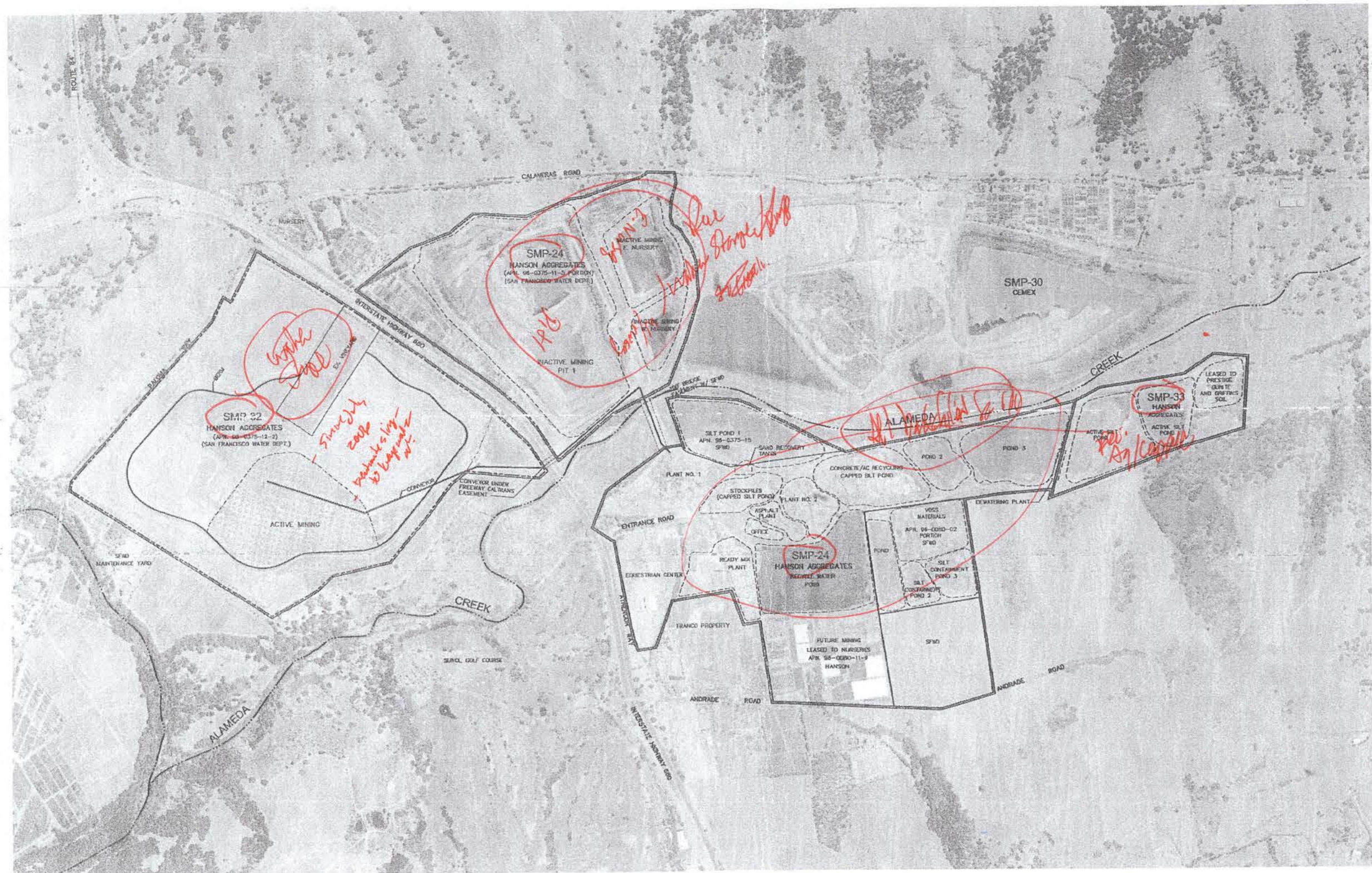
Section A-A

Section B-B

Section E-E

Section F-F

EXHIBIT B - SMP-24
 Approved by B/S Resolution R-16-62



HANSON AGGREGATES
PERIODIC REVIEW 2009
SMP-24, 32, 33

TWILL, INC.

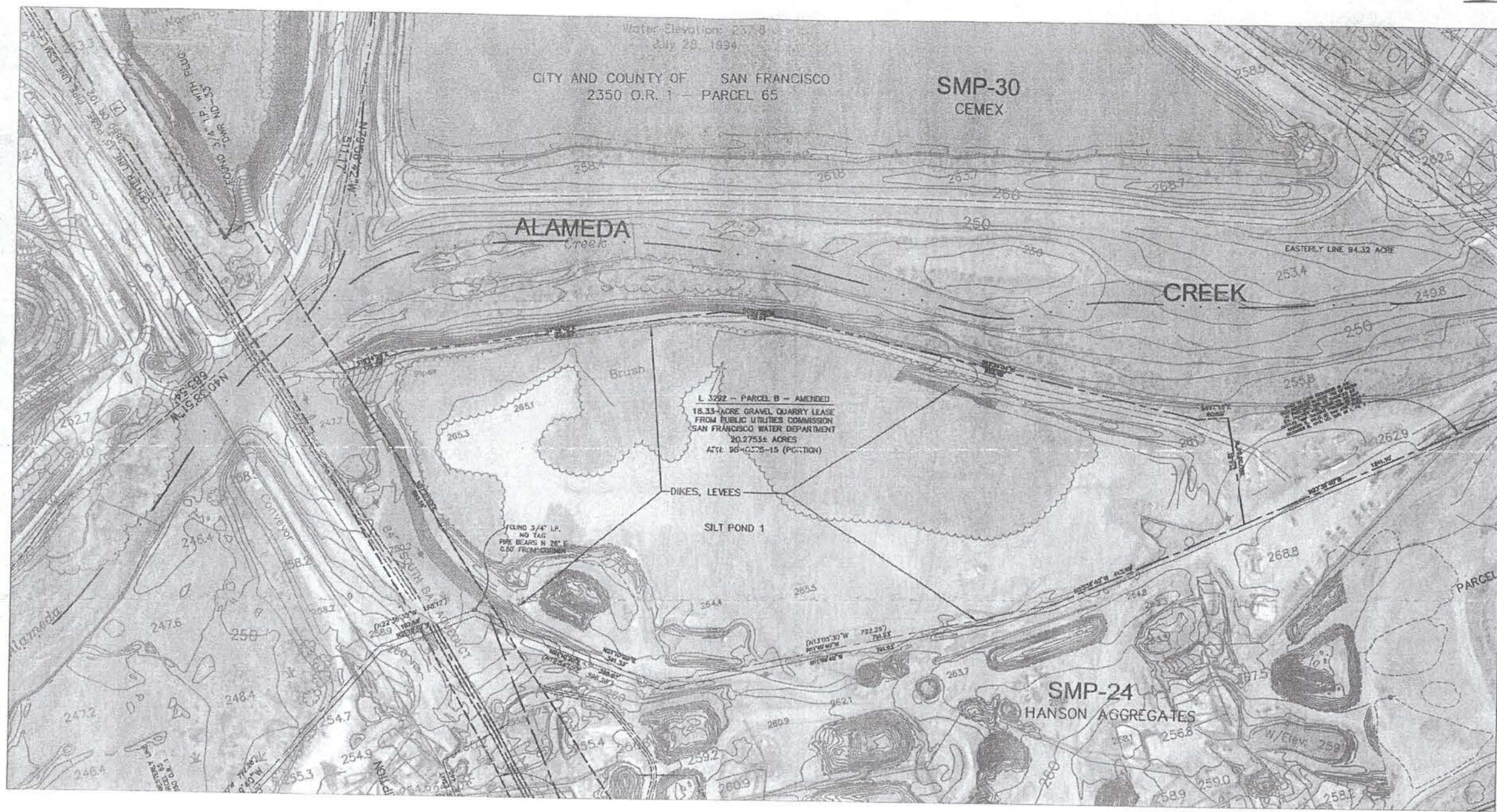
NOTE: THIS MAP WAS PREPARED USING PHOTOGRAMMETRIC COMPUTER AIDED DRAWING TECHNIQUES. IN DARK UNOBTAINED AREAS THIS MAP COMPLEYS WITH NATIONAL STANDARDS FOR MAP ACCURACY. IN AREAS OF POOR VEGETATION WHERE THE GROUND IS OCCULTED FROM VIEW, CONTOURS MAY DEVIATE FROM CORRECT ELEVATION. THIS IS BASED ON CALIFORNIA COORDINATE SYSTEM, ZONE 8, NAD83, ELEV. 1988. ELEVATIONS ARE BASED ON HANSON FIELD SURVEY CONTROL BY TWILL, INC.
DATE OF PHOTOGRAPHY: JULY 15, 2008

*STP-24
As per 2/13/09*

- LEGEND**
- PROPERTY LINE
 - QUARRY PERMIT BOUNDARY
 - MINING ACTIVITY



SCALE	1"=100'
DATE	JANUARY 2009
USER	JK, GCS
DRAWN BY	MLWH
CHECKED BY	JK
DATE	
REVISION	
SHEET NUMBER	1
OF	5 SHEETS
JOB NUMBER	001.00



Towill, Inc.

NOTE:
 THIS MAP WAS PREPARED USING PHOTOGRAMMETRIC CONTROL
 AND QUANTUM TECHNIQUES.
 IN OPEN UNRESTRICTED AREAS THIS MAP COMPLES WITH
 NATIONAL STANDARDS FOR MAP ACCURACY. IN AREAS OF
 DENSE VEGETATION WHERE THE DRIVING IS OBTAINED FROM VIEW
 CONTROLS MAY DEVIATE FROM CORRECT ELEVATION.
 GRID IS BASED ON CALIFORNIA COORDINATE SYSTEM, ZONE 10, NAD83, EPSG 31456.
 ELEVATIONS ARE BASED ON NAVD83.
 FIELD SURVEY CONTROL BY TOWILL, INC.
 DATE OF PHOTOGRAPHY JULY 10, 2008



Spinardi Associates
 Civil and Environmental
 Engineering
 265 San View Avenue, Piedmont, Ca 94610

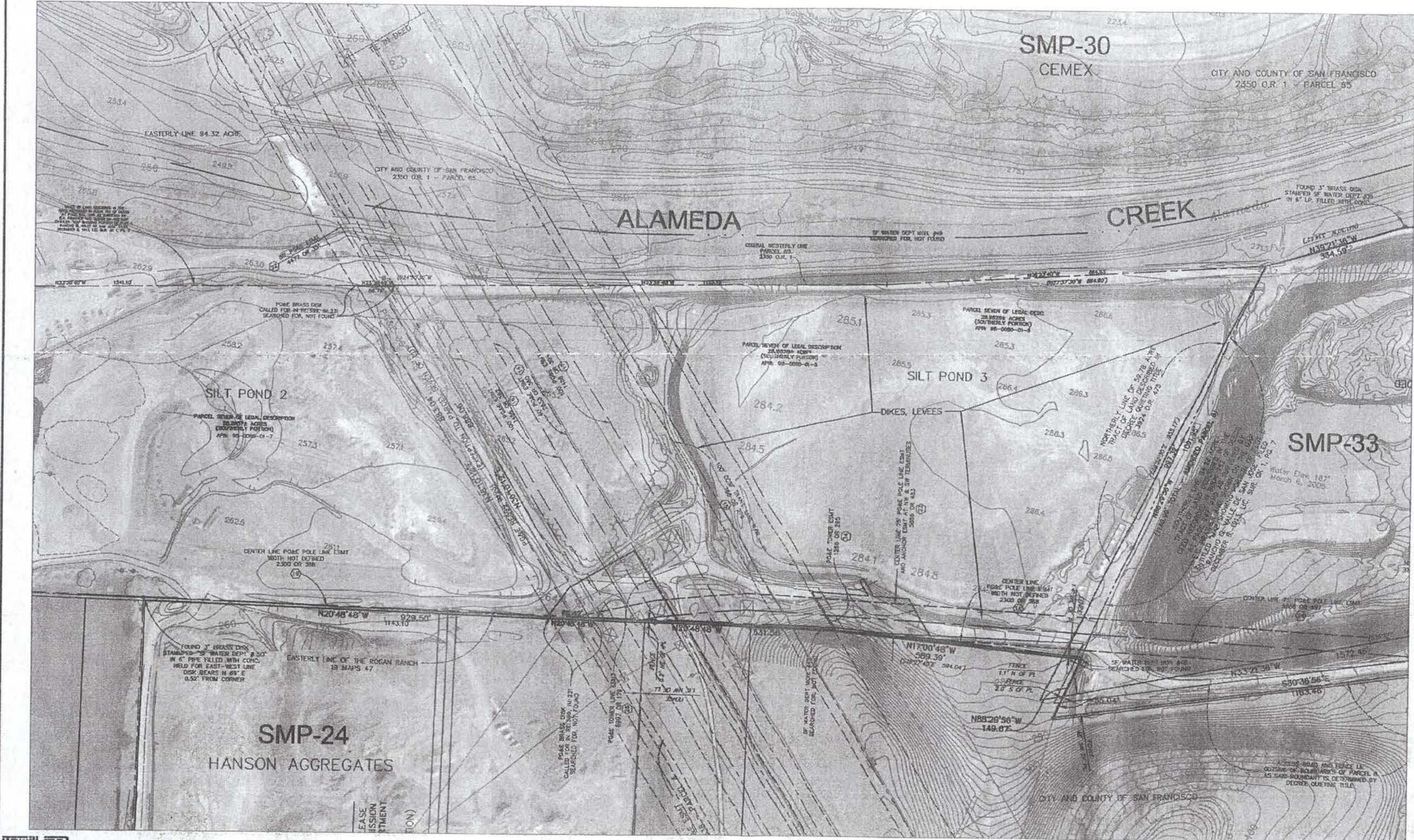
HANSON AGGREGATES
 SILT POND 1
 PERIODIC REVIEW 2009
 SMP-24, 32, 33

DATE	BY	REVISION
JANUARY 2008	ECG	ISSUED FOR PERIODIC REVIEW
SHEET NUMBER 2 OF 5 SHTS. JOB NUMBER 001.00		

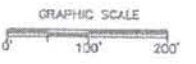


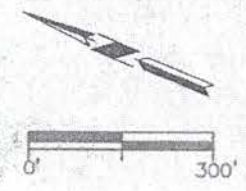
**HANSON AGGREGATES
 SILT POND 3
 PERIODIC REVIEW 20C9
 SMP-24, 32, 33**

SCALE	1"=100'
DATE	JANUARY 2009
DRAWN BY	AKS
PROJECT NO.	14-011
DATE OF SURVEY	2008
DATE OF PHOTOGRAPHY	JULY 18, 2008
DATE OF PHOTOGRAPHY	JULY 18, 2008
SHEET NUMBER	3
OF	5 SHTS.
JOB NUMBER	001.00



towill, inc.
 NOTE:
 THIS MAP WAS PREPARED USING PHOTODIAGRAMMATIC COMPUTER
 AIDED DRAWING TECHNIQUES.
 IN OPEN UNOBSTRUCTED AREAS THIS MAP COMPLES WITH
 NATIONAL STANDARDS FOR MAP ACCURACY. IN AREAS OF
 DENSE VEGETATION WHERE THE GROUND IS OCCURED FROM VIEW,
 CONTOURS MAY DEVIATE FROM CORRECT ELEVATION.
 AND IS BASED ON CALIFORNIA COORDINATE SYSTEM, ZONE 10, NAD83, EPC 1985.
 ELEVATIONS ARE BASED ON HANSON
 FIELD SURVEY CONTROL BY TOWILL, INC.
 DATE OF PHOTOGRAPHY JULY 18, 2008.






Spinardi Associates
 Civil and Environmental
 Engineering
 285 Sea View Avenue, Piedmont, Ca 94610

**HANSON AGGREGATES
 PLANT SITE AREA
 PERIODIC REVIEW 2009
 SMP-24, 32, 33**

DATE	1-1-2007
BY	JANUARY 2009
SCALE	AS SHOWN
DATE	1-1-2007
BY	JANUARY 2009
SCALE	AS SHOWN
DATE	1-1-2007
BY	JANUARY 2009
SCALE	AS SHOWN
SHEET NUMBER	
4	
OF 5 SHTS.	
JOB NUMBER	
001.00	



TERRILL, INC.

NOTE: THIS MAP WAS PREPARED USING PHOTOGRAMMETRIC COMPUTER AIDED DRAFTING TECHNIQUES. IN OPEN, UNOBSTRUCTED AREAS THIS MAP COMPLIES WITH NATIONAL STANDARDS FOR MAP ACCURACY. IN AREAS OF DENSE VEGETATION WHERE THE GROUND IS OCCURRED FROM VIEW, QUANTITIES MAY DEVIATE FROM CORRECT ELEVATION. GRID IS BASED ON CALIFORNIA COORDINATE SYSTEM, ZONE II, NAD83, EPIC 100K. ELEVATIONS ARE BASED ON NAVD83. FIELD SURVEY CONTROL BY TERRILL, INC. DATE OF PHOTOGRAPHY JULY 18, 2008.

LEGEND

- PROPERTY LINE
- - - QUARRY PERMIT BOUNDARY
- ===== MAINTENANCE ROADS
- ||||| AGRICULTURE (GRAZING)
- ||||| WATER STORAGE



Spinardi Associates
Civil and Environmental
Engineering
205 San View Avenue, Piedmont, Ca 94610

**HANSON AGGREGATES
PERIODIC REVIEW 2009
SMP-24, 32, 33
RECLAMATION PLAN OVERVIEW**

SCALE	1"=500'
DATE	JANUARY 2009
DESIGNED BY	ROS
DRAWN BY	LAJWA
CHECKED BY	ROS
PROJECT NO.	
SHEET NO.	5
TOTAL SHEETS	5
JOB NUMBER	001.00