



Town Hall Meeting #2

Hosted by Alameda County Supervisor Scott Haggerty

When: Thursday, February 18, 2016 at 7:00 P.M.

**Where: Mendenhall Middle School Multi-Purpose Room
1701 El Padro Drive, Livermore, CA 94550**

- ◆ Do you live in a neighborhood within the State Route 84/Isabel Avenue corridor in Livermore?
- ◆ Is your property affected by dust and dirt generated within this area?

You are invited to attend this meeting for an update on plans to address dust generated in the corridor and its impacts on adjacent neighborhoods.

Invited representatives include:

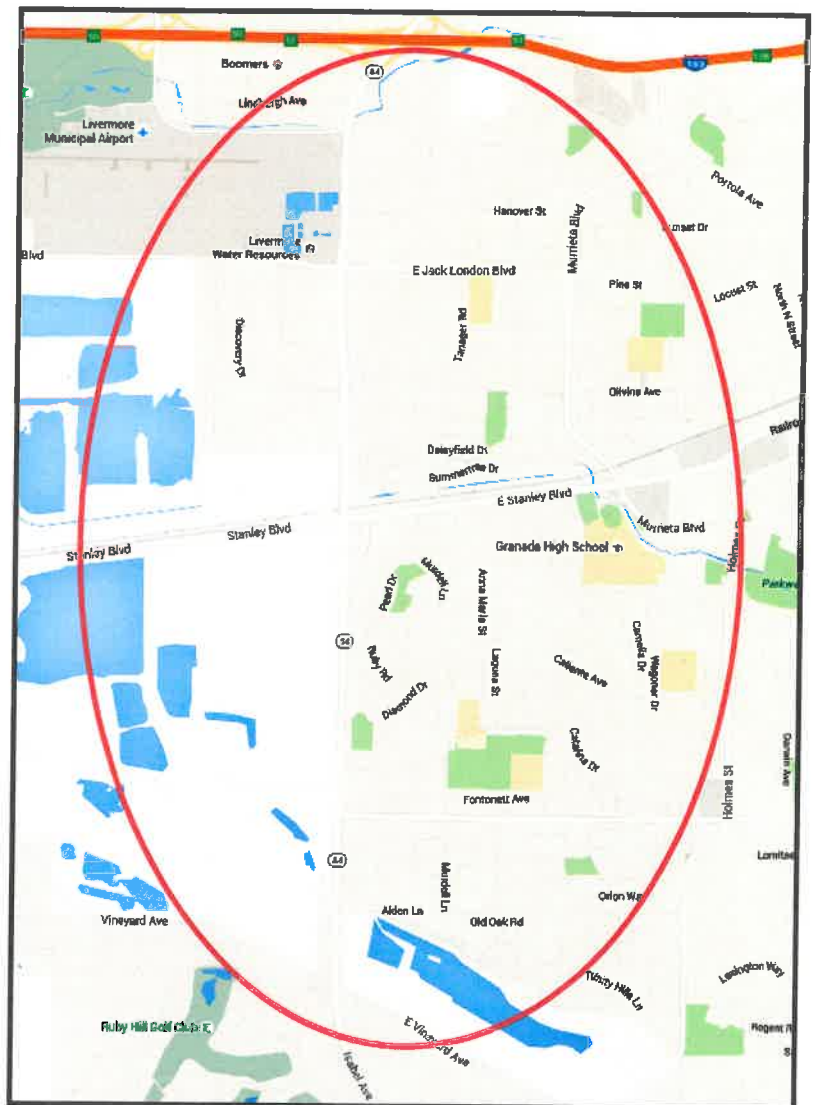
- ◆ Alameda County Community Development Agency
- ◆ Alameda County Transportation Commission
- ◆ Bay Area Air Quality Management District
- ◆ City of Livermore
- ◆ Caltrans
- ◆ Cemex
- ◆ Vulcan

For more information contact:

Dawn Argula

(925) 551-6995

Dawn.Argula@ACGov.org





Alameda County Supervisor Scott Haggerty
SR 84/Isabel Avenue Corridor Dust Impacts Town Hall Meeting
Mendenhall Middle School Multi-Purpose Room
1701 El Padro Drive, Livermore 94550
Thursday 02/18/16 - 7 p.m.

- Welcome & Opening Comments - Scott Haggerty
- Representatives:
 - Bay Area Air Quality Management District
Wayne Kino, Director of Enforcement
 - Alameda County Community Development Agency
Jim Gilford, Director Neighborhood Preservation & Sustainability
 - Vulcan Materials Company
Kevin Torell, Area Manager & Bart Mayer, Plant Manager
 - Cemex – Eliot Quarry
Ron Wilson, Area Manager & Ryan Barrett, Plant Manager
 - City of Livermore – Development Activities
Bob Follenfant, Construction Inspection Manager
 - Alameda County Transportation Commission (ACTC) & Caltrans
Stefan Garcia, Project Manager ACTC & Marcus Wagner, Caltrans Public Information Officer
- Q & A
- Wrap up

Alameda County Supervisor Scott Haggerty
SR 84/Isabel Avenue Corridor Dust Impacts Town Hall Meeting
Thursday February 18, 2016



CONTACT LIST

NOTE: Please include as much detailed information (description of dust activity, location, date, time, etc.) as possible when reporting incidents.

Alameda County Supervisor Scott Haggerty

925-551-6995 District1@acgov.org

Staff: Dawn Argula, Chief of Staff Operations – dawn.argula@acgov.org

Bay Area Air Quality Management District

Wayne Kino, Director of Enforcement - wkino@baaqmd.gov

Juan Ortellado, Air Quality Program Manager - jortellado@baaqmd.gov

Air Pollution Complaint Webpage -

<https://permits.baaqmd.gov/PublicForms/ComplaintWizardSelection>

Complaint Line: 1-800-334-6367

Alameda County Community Development Agency

Jim Gilford, Director Neighborhood Preservation & Sustainability

james.gilford@acgov.org

Cemex – Eliot Quarry www.cemexeliotmine.com

Ryan Barrett, Plant Manager – 209-737-1263 ryant.barrett@cemex.com

John Trembley, Area Manager – 503-798-3047 johnh.trembley@cemex.com

24-Hour Community Hotline 925-426-2284 community@cemexeliotmine.com

Vulcan Materials Company

Bart Mayer, Plant Manager

925-249-3060 - mayerb@vmcmail.com

Vulcan Dust Hotline – 800-474-4090

City of Livermore

Bob Follenfant, Construction Inspection Manager

925-960-4542 rcfollenfant@cityoflivermore.net

Caltrans – SR 84 Expressway Project

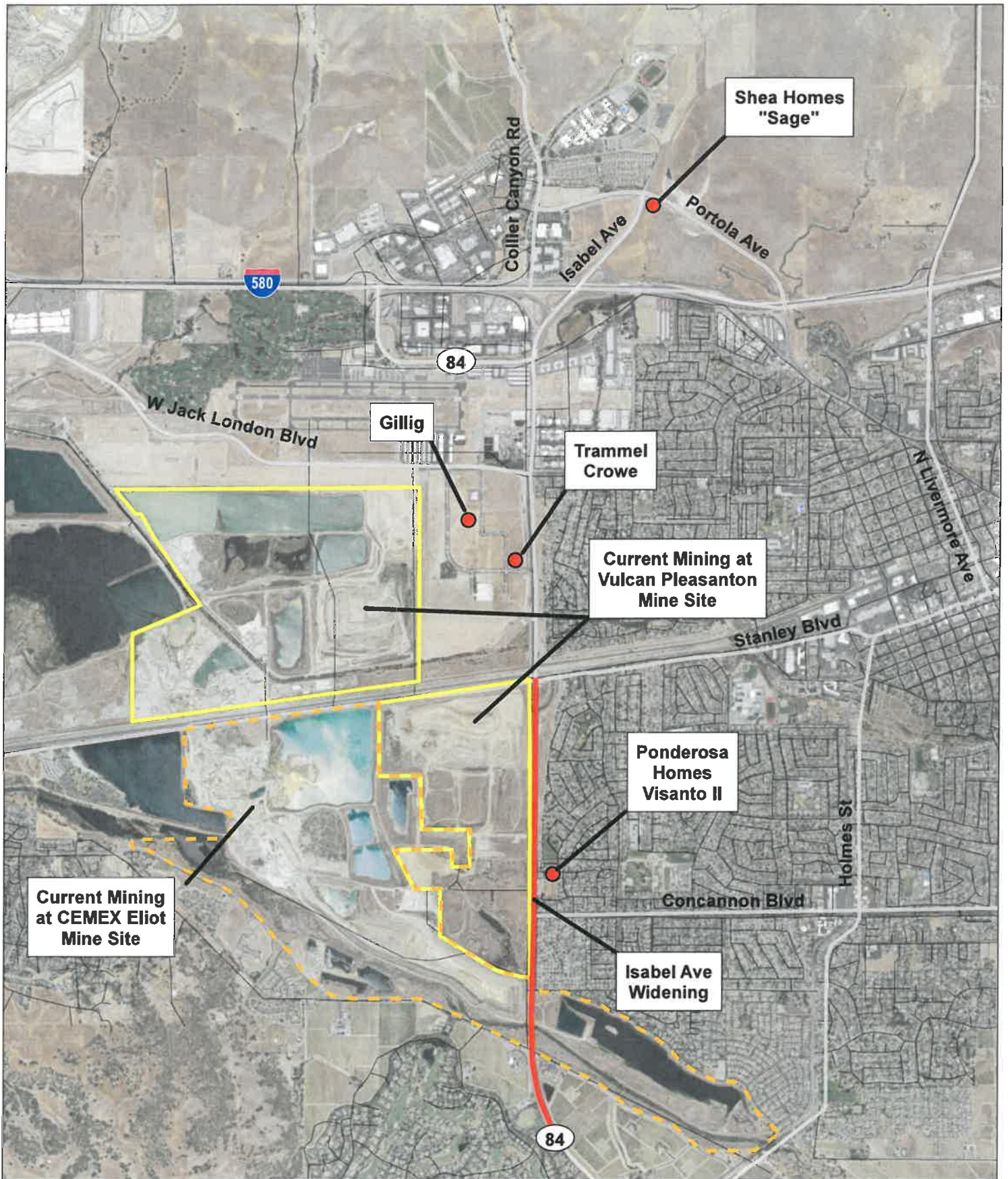
Marcus Wagner, Public Information Officer

510-622-8758 marcus.wagner@dot.ca.gov

Caltrans Maintenance

510-614-5942

Maintenance Service Request webpage - <http://dot.hq/main/mrsrsubmit/>



SOURCES: ESRI Background Aerial (2014-6-6)



Construction Projects and Mine Operations Location Map



TOWN HALL MEETING #2 SR 84/ISABEL CORRIDOR DUST IMPACTS

ALAMEDA COUNTY SUPERVISOR SCOTT HAGGERTY

FEBRUARY 18, 2016

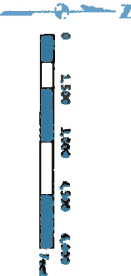


SR 84/ISABEL AVENUE CORRIDOR

- BAY AREA AIR QUALITY MANAGEMENT DISTRICT
- ALAMEDA COUNTY COMMUNITY DEVELOPMENT AGENCY
 - VULCAN MATERIALS COMPANY
 - CEMEX – ELIOT QUARRY
- CITY OF LIVERMORE
- ALAMEDA COUNTY TRANSPORTATION COMMISSION (ACTC) & CALTRANS



5010615 ESR Performance Area/1/2014-4-6



Construction Projects and Mine Operations Location Map



SUPERVISOR SCOTT HAGGERTY

district1@acgov.org

925-551-6995

BENCHMARK[®] RESOURCES

DUST ISSUES IN THE LIVERMORE AREA TOWN HALL MEETING

**ALAMEDA COUNTY COMMUNITY DEVELOPMENT AGENCY
NEIGHBORHOOD PRESERVATION AND SUSTAINABILITY DEPARTMENT**

JAMES GILFORD, JAMES.GILFORD@ACGOV.ORG

**DEPUTY DIRECTOR, ALAMEDA COUNTY COMMUNITY DEVELOPMENT AGENCY
DIRECTOR, NEIGHBORHOOD PRESERVATION AND SUSTAINABILITY DEPARTMENT**

BENCHMARK RESOURCES

**ANDREW WHITE, AWHITE@BENCHMARKRESOURCES.NET
SMARA CONSULTANT**



REVIEW OF NOVEMBER 17, 2015 MEETING

- CDA's Neighborhood Preservation and Sustainability Departments Role:
 - Monitor County mining operations to ensure they operate consistent with Alameda County Surface Mining Ordinance (ACSMO), their Surface Mining Permits (SMP) and reclamation plans.
 - Initiate enforcement actions when mining operations exceed authority granted in ACSMO, SMP or reclamation plan.
 - Existing SMPs provide conditions to minimize dust consistent with legally established regulations for the control of fugitive dust, established and enforced by BAAQMD.
 - BAAQMD inspects, investigates, and as appropriate, issues violations of air quality standards.
- Last summer's dust issues were the culmination of unique environmental circumstances and mining operations closer to Isabel Avenue.
- CDA is committed to working with other agencies, the community, and mining operators to improve the situation.



SUBSEQUENT COORDINATION

- Multiple coordination meetings with the Supervisor's office, mining operators, city and state agencies discussing:
 - Potential sources and activities generating dust
 - Program to monitor dust to identify sources and activities
 - Agency and operator responsibilities; and
 - Development of a Dust Working Group
 - Creation of a system to respond to future dust complaints
- Required the mining operators to prepare fugitive dust control plans, which will be incorporated into SMPs through periodic review and reclamation processes currently underway



RECOMMENDED APPROACH

- Communicate with mine operators and BAAQMD regarding dust concerns consistent with the protocol discussed.
- County will continue to monitor the mining operators compliance with existing SMPs and reclamation plans (annual reporting and periodic reviews).
- County will continue to coordinate with the Dust Working Group (Supervisors office, local and state agencies, and mining operators) to ensure dust issues are addressed.



Vulcan Materials Company Pleasanton Quarry

Good Neighbor Practices

Dust Control





FUGITIVE DUST MANAGEMENT PLAN

Fugitive Dust Source and Control Measures

- Earth moving activity
- Disturbed surface areas
- Inactive disturbed surface areas
- Unpaved roads
- Open storage piles
- Paved road track-out




FUGITIVE DUST MANAGEMENT PLAN

Administrative Control Measures

- Inspection And Maintenance Procedures
- Employee Training
- Monitoring
- Plan Review





VULCAN MATERIALS COMPANY
PLEASANTON SITE PERMIT # 8507
IF YOU SEE DUST COMING FROM
THIS PROJECT CALL:
BART MAYER 800-474-4090
IF YOU DO NOT RECEIVE A RESPONSE
PLEASE CALL THE BAAQMD AT 1-800-334-6367



Contact Information

*Do you see dust
you believe is coming from
our Pleasanton operation?*

DUST HOTLINE
800-474-4090



Vulcan
Materials Company
WESTERN DIVISION

*Committed to partnering
with our community!*

Vulcan
Materials Company



Vulcan's Dedication

- Dedicated to being good neighbors in our communities.
- Dedicated to responding quickly to any complaints concerning our operations.
- Dedicated to maintaining open lines of communications with the community.

