



# Town Hall Meeting

Hosted by Alameda County Supervisor Scott Haggerty

**When: Tuesday, November 17, 2015 at 7:00 P.M.**

**Where: Granada High School Student Union  
400 Wall Street, Livermore, CA 94550**

- ♦ Do you live in a neighborhood within the State Route 84/Isabel Avenue corridor in Livermore?
- ♦ Is your property affected by dust and dirt generated within this area?

Supervisor Scott Haggerty invites you to attend a meeting to discuss these impacts, and meet with representatives from public agencies and neighboring quarry companies.

## Invited representatives include:

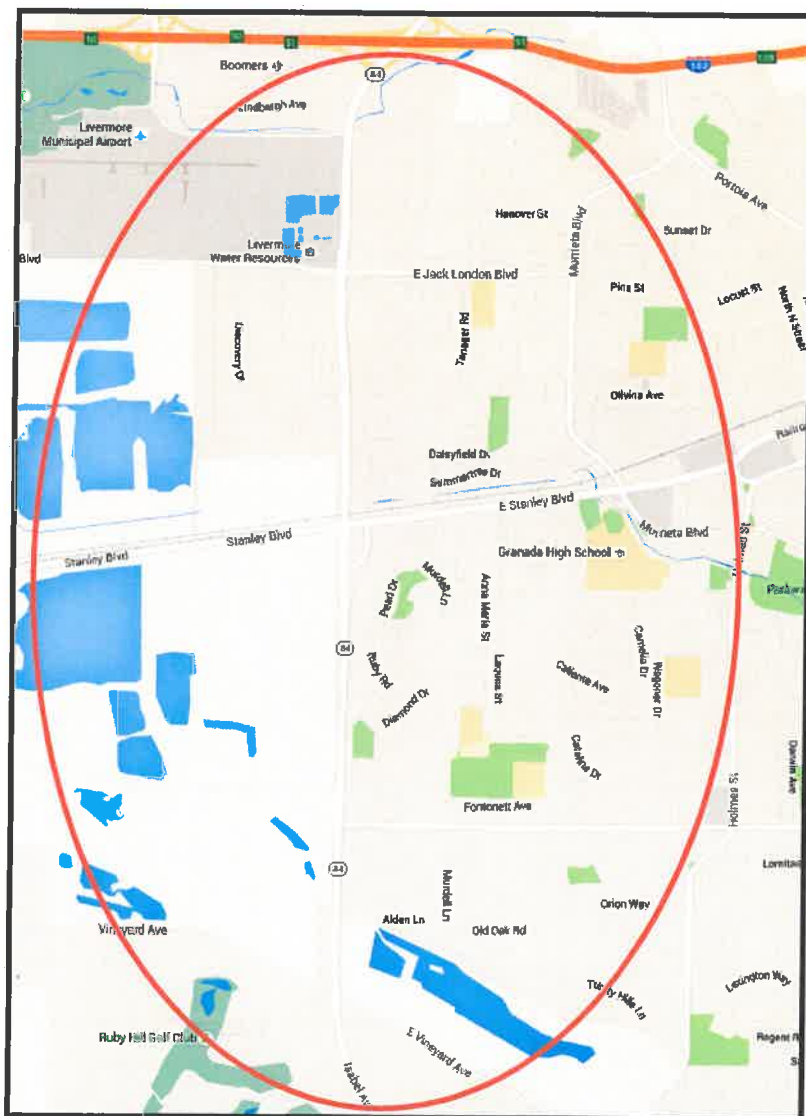
- ♦ Alameda County Community Development Agency
- ♦ Alameda County Transportation Commission
- ♦ Bay Area Air Quality Management District
- ♦ City of Livermore
- ♦ Caltrans
- ♦ Cemex
- ♦ Vulcan

For more information contact:

Dawn Argula

(925) 551-6995

[Dawn.Argula@ACGov.org](mailto:Dawn.Argula@ACGov.org)





Alameda County Supervisor Scott Haggerty  
SR 84/Isabel Avenue Corridor Town Hall Meeting  
Granada High School Student Union – 400 Wall Street, Livermore  
Tuesday 11/17/15  
7 p.m.

- Welcome & Opening Comments - Scott Haggerty
- Speakers –
  - Bruce Steubing, Benchmark Resources representing Alameda County Community Development Agency
  - Kevin Torell, Max Pfaff, Bart Mayer – Vulcan Materials Company
  - Ron Wilson, John Trembley – Cemex
  - Bob Follenfant – City of Livermore
  - Stefan Garcia - Alameda County Transportation Commission (ACTC) & Marcus Wagner – Caltrans
  - Wayne Kino – Bay Area Air Quality Management District
- Q & A
- Wrap up

Alameda County Supervisor Scott Haggerty  
SR 84/Isabel Avenue Corridor Town Hall Meeting  
Tuesday 11/17/15



**CONTACT LIST**

**Alameda County Supervisor Scott Haggerty**

925-551-6995

[District1@acgov.org](mailto:District1@acgov.org)

Staff: Dawn Argula, Chief of Staff Operations

**Alameda County Community Development Agency**

Jim Gilford, Director Neighborhood Preservation & Sustainability

[james.gilford@acgov.org](mailto:james.gilford@acgov.org)

**City of Livermore**

Bob Follenfant, Construction Inspection Manager

925-960-4542

[rcfollenfant@cityoflivermore.net](mailto:rcfollenfant@cityoflivermore.net)

**Caltrans**

Marcus Wagner, Public Information Officer

510-622-8758

[marcus.wagner@dot.ca.gov](mailto:marcus.wagner@dot.ca.gov)

**Caltrans Maintenance**

510-614-5942

Maintenance Service Request webpage - <http://dot.hq/main/msrsubmit/>

**Cemex**

John Trembley, Area Manager

503-798-3047

[johnh.trembley@cemex.com](mailto:johnh.trembley@cemex.com)

**Vulcan**

Bart Mayer, Plant Manager

925-249-3060

[mayerb@vmcmail.com](mailto:mayerb@vmcmail.com)

**Bay Area Air Quality Management District**

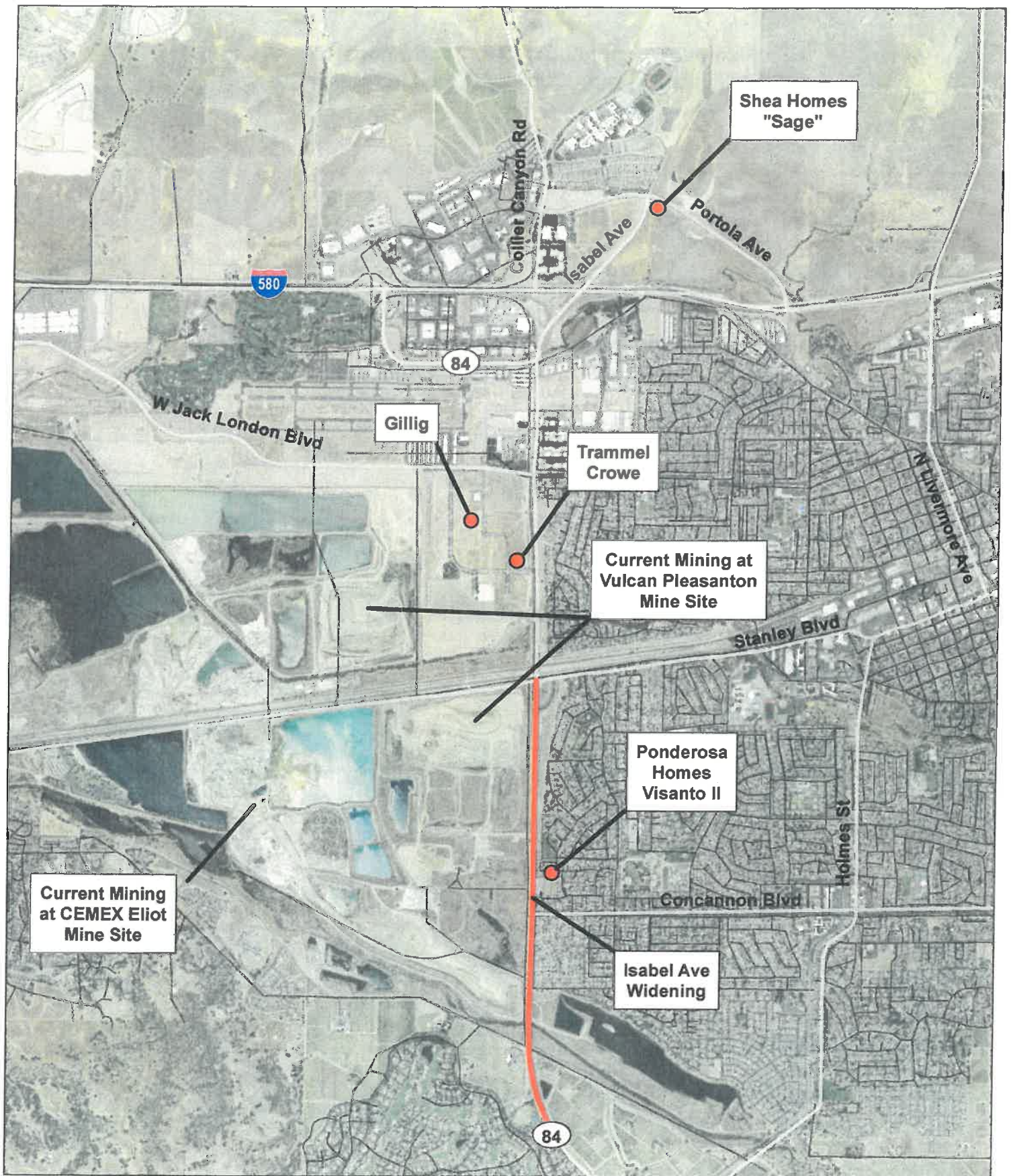
Wayne Kino, Director of Enforcement

Complaint Line: 1-800-334-6367

[wkino@baaqmd.gov](mailto:wkino@baaqmd.gov)

Air Pollution Complaint Webpage -

<https://permits.baaqmd.gov/PublicForms/ComplaintWizardSelection>



SOURCES: ESRI Background Aerial (2014-6-6)



0 1,500 3,000 4,500 6,000  
Feet

Construction Projects and Mine Operations Location Map



# Town Hall Meeting

## Dust Impacts in SR 84/Isabel Corridor

---

ALAMEDA COUNTY SUPERVISOR SCOTT HAGGERTY

DISTRICT 1

NOVEMBER 17, 2015



# Dust Impacts

## SR 84/Isabel Avenue Corridor

---

- Alameda County Community Development Agency
  - Vulcan
  - Cemex
- City of Livermore
- Alameda County Transportation Commission (ACTC) & Caltrans
- Bay Area Air Quality Management District





**Supervisor Scott Haggerty**

**[district1@acgov.org](mailto:district1@acgov.org)**

**925-551-6995**

**<http://www.acgov.org/board/district1/>**



# DUST ISSUES IN THE LIVERMORE AREA TOWN HALL MEETING

ALAMEDA COUNTY COMMUNITY DEVELOPMENT AGENCY  
NEIGHBORHOOD PRESERVATION AND SUSTAINABILITY DEPARTMENT

JAMES GILFORD, JAMES.GILFORD@ACGOV.ORG

DEPUTY DIRECTOR, ALAMEDA COUNTY COMMUNITY DEVELOPMENT AGENCY  
DIRECTOR, NEIGHBORHOOD PRESERVATION AND SUSTAINABILITY DEPARTMENT

## BENCHMARK RESOURCES

BRUCE STEUBING, [BSTEUBING@BENCHMARKRESOURCES.NET](mailto:BSTEUBING@BENCHMARKRESOURCES.NET)  
SMARA CONSULTANT



# ENVIRONMENTAL SETTING AND BASELINE CONDITIONS

- Drought Conditions
- Several thousand undeveloped acres in region
- Various dust generating sources
- Recent Activities



# NEIGHBORHOOD PRESERVATION AND SUSTAINABILITY DEPARTMENT'S ROLE

- Community Development Agency Neighborhood Preservation and Sustainability Department is the lead agency for the State Surface Mining and Reclamation Act (SMARA) and the County's Surface Mining Ordinance.
- Annual SMARA Inspection of All Mining Sites
- Periodic Review of Mining Operations
- Enforce Conditions of Approval
  - Proactively work with Operator to resolve issues
  - Notice of Violation
  - Order to Comply



**BENCHMARK**  
RESOURCES

## SECTION 6.80.210 (I) OF THE SURFACE MINING ORDINANCE

- Surface mining operations shall be conducted and the site maintained in accordance with the following requirements:

\* \* \*

**Control of Noise, Dust and Bright Lights. All activities of mining and processing minerals shall be conducted in a manner that noise, dust and bright lights do not exceed levels compatible with the uses of adjacent lands as determined by the planning commission in the issuance of the surface mining permit or as a result of its periodic review of any permit.**



**BENCHMARK**  
RESOURCES

## CONDITIONS OF APPROVAL FROM SMP—16

- (13) All surface mining and processing operations emitting smoke, vapors, dust and other airborne contaminants shall be provided with all necessary control measures and devices as required by the Alameda County Health Care Services Agency and the Bay Area Air Quality Management District (BAAQMD) to prevent the occurrence of nuisance and undue pollution of the air. All equipment shall have current permits issued by the BAAQMD as legal and appropriate.



## CONDITIONS OF APPROVAL FROM SMP—16

- (14) The driver of a weighed vehicle, loaded beyond current State of California maximum legal weights, shall be notified and requested to reduce the load to the legal limit. **If loaded materials are subject to dust generation, drivers shall be requested to moisten loads at facilities to be conveniently located and maintained on site.** All loaded vehicles shall be required to pass over a material shakedown area with berm, bumper or ditches provided. The Permittee shall request all vehicle operators to have noise attenuating mufflers as required by the State of California Vehicle Code. **Signs notifying drivers of these requirements shall be posted at the scale location.** Provisions contained in this condition shall be mandatory for vehicles owned by, or under the control of Permittee. Drivers not cooperating with this provision shall be discouraged from hauling materials from the site. Haulage roads and loading areas shall be paved, oiled or watered to maintain a dust-free condition.



## CONDITIONS OF APPROVAL FROM SMP—16

- (16) Areas of active mining, materials processing and in-use mining haul roads shall be watered as necessary on a regular basis during all periods of operation by at least one water truck to minimize dust. During the dry season, this shall be at least once daily prior to major operations and as required to eliminate visible dust emissions.
- (55) Permittee shall implement all feasible dust control measures that are identified in the South Coast Air Quality Management District Rule 403 Implementation Handbook.



## RECOMMENDED APPROACH

- Communicate with Mine Operators regarding your Concerns and Copy Neighborhood Preservation and Sustainability Department to keep in the loop.
- County and Operators are Committed to Compliance with Regulations and Addressing Neighborhood Concerns.
- County, Operators, City of Livermore and Air District will Continue to Coordinate to Ensure Dust Issues are Addressed.



# Vulcan Materials Company Pleasanton Quarry

## *Good Neighbor Practices*

---

### *Dust Control*





# Dust Control Practices

- Conduct watering as necessary to prevent dust emissions from extending more than 100 feet.
- Apply dust suppression in sufficient quantity and frequency to maintain a stabilized surface.
- Water all roads used for vehicular traffic at least once every two hours of active operations.
- Apply water to surface area of storage piles on a daily basis when there is evidence of wind-driven fugitive dust.



# Water Trucks



- Actively disturbed areas are constantly watered during extraction hours (currently between 7am – 5pm).
- Processing plant is watered on a regular basis 24 hours per day.



# Hydroseed



- Once stockpiles of dirt are complete, they are treated with a hydroseed to vegetate the slope with grasses, controlling dust and erosion.



# BAAQMD / County Inspections

- Did not see plumes of dust leaving the property
- Could not validate complaints
- Identified that other sources could be the cause



# Vulcan's Dedication

- Dedicated to being good neighbors in our communities.
- Dedicated to responding quickly to any complaints concerning our operations.
- Dedicated to maintaining open lines of communications with the community.



# Contact Information

*Bart Mayer*

*Plant Manager*

*(925) 249-3060*

*or*

*Barbara Goodrich-Welk*

*Manager, Projects & External Affairs*

*(858) 530-9444*



# CEMEX

---

**Ron Wilson, Manager, Land Use Permits – Pacific Region**

**916-941-2852**

**[ronaldd.wilson@cemex.com](mailto:ronaldd.wilson@cemex.com)**

**John Trembley, Area Manager**

**503-798-3047**

**[johnh.trembley@cemex.com](mailto:johnh.trembley@cemex.com)**

**[www.cemex.com](http://www.cemex.com)**















# Town Hall Meeting

November 17, 2015

## Projects Within The City of Livermore



LIVERMORE  
CALIFORNIA

# Town Hall Meeting

November 17, 2015



## List of Local Projects:

- Shea Sage
- Trammel Crowe
- Gillig
- Ponderosa Homes
- City Projects
- Private Developments



# Town Hall Meeting

November 17, 2015

## Erosion & Dust Control – “Best Management Practices”



- Construction Entrances
- Stockpile Management
- Hydroseed & Tackifier
- Water Trucks
- Sweepers
- Construction Access Roads
- Job Cleanliness



# Town Hall Meeting

November 17, 2015

## Erosion & Dust Control – Best Management Practices



# Town Hall Meeting

November 17, 2015



## City Contacts

- Building Inspection and Code Enforcement:

Doug Martin

925 960-4422

[ddmartin@cityoflivermore.net](mailto:ddmartin@cityoflivermore.net)

- Construction Inspection:

Bob Follenfant

925 960-4542

[rcfollenfant@cityoflivermore.net](mailto:rcfollenfant@cityoflivermore.net)



# ROUTE 84 EXPRESSWAY WIDENING PROJECT NORTH SEGMENT



## Total Project Cost:

\$48.0 M

## Construction Years:

2012- 2014 (Complete and open to traffic)

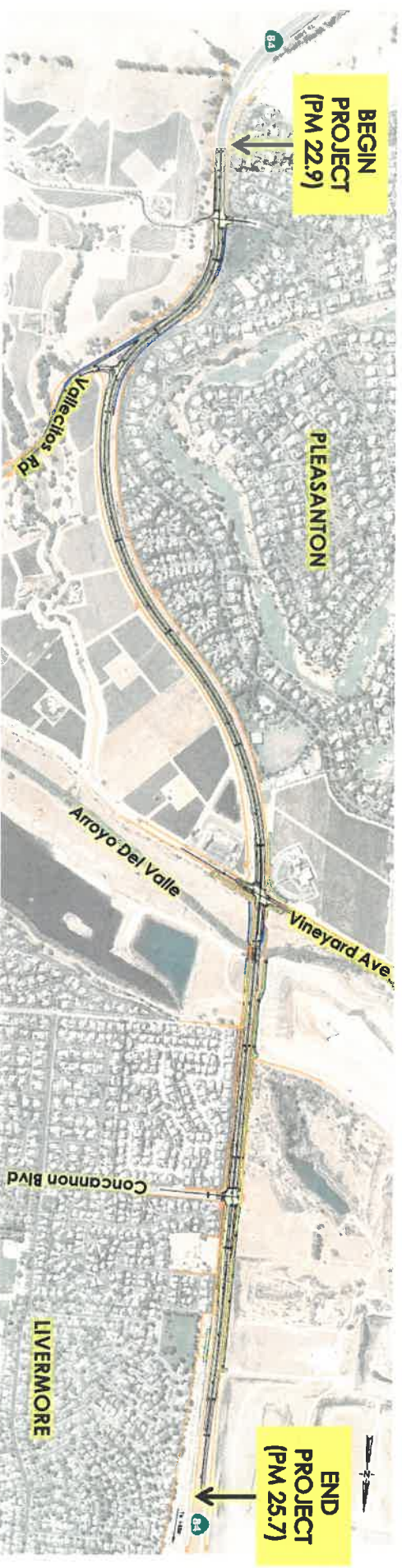
**Contact:** Marcus Wagner, Caltrans Public Information Officer

(510) 622-8758 [marcus.wagner@dot.ca.gov](mailto:marcus.wagner@dot.ca.gov)

Town Hall Meeting  
November 17, 2015



# ROUTE 84 EXPRESSWAY WIDENING PROJECT SOUTH SEGMENT



## Total Project Cost:

\$41.9 M

## Construction Years:

2016- 2017 (Work will begin in Spring 2016)

**Contact:** Marcus Wagner, Caltrans Public Information Officer

(510) 622-8758 [marcus.wagner@dot.ca.gov](mailto:marcus.wagner@dot.ca.gov)

Town Hall Meeting  
November 17, 2015



# Caltrans Maintenance

- Sweeping SR 84 twice monthly schedule
- Contact:
  - Maintenance Service Request (MSR) Webpage <http://dot.hq/maint/msrsubmit/>
  - East Bay Region Office (510) 614-5942

Town Hall Meeting  
November 17, 2015

